

**WALLPRO**



**NEW**

Self-cleaning fume extractor  
for the professional welder



## DO YOU REMOVE WELDING FUMES EFFECTIVELY?

**We do.** Removing welding fumes in a welding workshop, especially at the source, contributes significantly to a better work environment. Source extraction remains the most effective method of capturing and removing welding fumes directly from the breathing zone of the welder.

We have for over 40 years of experience. Plymovent has been specialising in the extraction and filtration of welding fumes. We offer high-quality solutions that keep the background concentration of welding fumes within the legal limits, in accordance with international guidelines.

All our extraction and filtration products are designed primarily to remove and control welding fumes in the metal-working industry to protect the welders and people working nearby. The result: better work performance, increased productivity and less absence due to illness.

# WALLPRO

**EFFICIENT  
POWERFUL  
SAFE**

## WALLPRO

The WallPro welding fume extractor with automatic filter cleaning system is designed with the professional welder in mind.

It is suitable for a wide range of welding fume and other dust applications. It can be used with one or two extraction arms and has a special PowerPlus model for very heavy fume conditions. The WallPro is built according to the latest insights in cleanable filter technology with a unique dust-free maintenance concept to provide safety to everybody; the welder, his direct environment as well as the maintenance engineer.

\* In most countries W3 is required to allow recirculation of filtered fumes from stainless steel applications.

\*\* Offline cleaning is cleaning the cartridge by back-pulsing with compressed air while the fan is off. This cleaning method is normally used in central filter systems and known for its unmatched cleaning efficiency and now standardly available on the WallPro units.

\*\*\* Membrane surface filtration captures the fumes at the surface of the filter media and avoids penetration. This is known to be very efficient and the best suitable method for self-cleaning systems.

## BENEFITS

The WallPro has a unique set of features that provide real benefits:

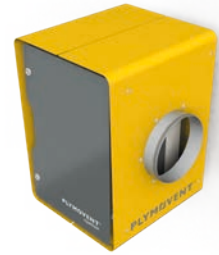
- A safe working environment due to a high efficiency PTFE membrane filter cartridge.
- Suitable for welding fume from steel as well as stainless steel welding applications, in compliance with ISO-EN 15012-1:2013 welding class W3\*.
- Enhanced efficiency and safety can be met when combined with wall mounted HepaModule final filter.
- Low operational costs and long filter life due to a unique combination of features that optimize the filter cleaning:
  - Offline filter cleaning function\*\* next to pressure controlled cleaning for extra high efficiency cleaning.
  - PTFE membrane filter cartridge with surface filtration best suitable for self-cleaning systems\*\*\*.
  - RamAir™ pulse amplifier cleaning system, for effective filter cleaning at low energy consumption.
- Adaptable to your specific need by a choice of three extraction power levels:
  - Standard for medium welding fume production.
  - Power for medium to heavy fume production.
  - PowerPlus for applications with very high fume production.
- Large variety of extraction arms.
- Unique dust-free maintenance concept to provide a safe working environment not only during welding but also during maintenance.

## FEATURES

Three extraction power levels:  
Standard, Power and PowerPlus.

- High efficiency PTFE membrane filter cartridge on polyester BiCo carrier.
- Self-cleaning system with RamAir™ pulse amplifier.

**NEW** Optional  
HEPA filter cassette



- Standardly with wall mounting bracket
- Filter classification H14
- Front loaded
- Optional manometer kit



Non-return valves  
between extraction  
arm(s) and filter housing.

Mounting of up to two  
extraction arms directly  
on the unit or at the wall.



Easy operation with filter control box.

AllTight™ innovative double  
adhesive sealing.

Shut-off valve between  
dustbin and filter housing  
allows for dust-free online  
dustbin removal.

Unique bag-in/bag-out  
dust-free maintenance  
concept for filter replacement.

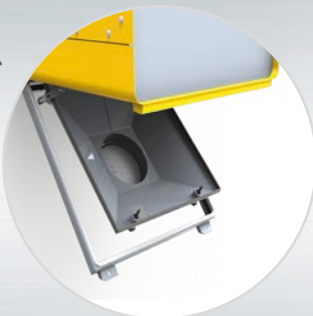


image: WallPro with KUA-arm

## POWERPLUS

### SAFE DUST-FREE MAINTENANCE

The WallPro enables dust-free maintenance to minimize exposure during the most common service activities:

- Dust-free dustbin removal by closing the shut-off valve between the filter and the dustbin, which also allows for removal of the dustbin during operation.
- Dust-free filter exchange with bag-in/bag-out system.
- Long service intervals.

### WALLPRO POWERPLUS

The WallPro is adaptable to your application by a choice of three extraction power levels. The most powerful version is the WallPro PowerPlus; the combination of the extraction arm with the largest diameter (200 mm (7.9 in)) and the most powerful fan.

This unit has an extraction capacity of no less than 1800 m<sup>3</sup>/h (1050 CFM) compared to 1000 m<sup>3</sup>/h (590 CFM) of the standard level. This unit is specially suitable for applications with a very high fume or dust production, such as automatic welding, welding at high amperage and flux cored arc welding.

## EXAMPLES OF AVAILABLE CONFIGURATIONS\*



WallPro Single with Direct Mounted (DM) extraction arm



WallPro Double with Direct Mounted (DM) extraction arms



WallPro Single with External Mounted (EM) extraction arm



Option: Dustbin extension set

\* Ask your sales representative for the complete list of configurations.

## TECHNICAL SPECIFICATIONS\*

	WallPro Single	WallPro Double	WallPro PowerPlus
Number of extraction arms	1	2	1
Arm diameter	160 mm / 200 mm (6.3 in. / 7.9 in.)	160 mm / 200 mm (6.3 in. / 7.9 in.)	200 mm (6.3 in. / 7.9 in.)
Arm length	3 m / 4 m (9.8 ft / 13.1 ft)	3 m / 4 m (9.8 ft / 13.1 ft)	3 m / 4 m (9.8 ft / 13.1 ft)
Fan power	1,1 kW (1.5 HP)	2,2 kW (1.5 HP)	2,2 kW (1.5 HP)
Filter area	20 m <sup>2</sup> (215 ft <sup>2</sup> )	20 m <sup>2</sup> (215 ft <sup>2</sup> )	20 m <sup>2</sup> (215 ft <sup>2</sup> )
Welding fume class	W3 in compliance with ISO-EN 15012-1:2013	W3 in compliance with ISO-EN 15012-1:2013	W3 in compliance with ISO-EN 15012-1:2013
Filter medium	PTFE membrane on BiCo polyester carrier	PTFE membrane on BiCo polyester carrier	PTFE membrane on BiCo polyester carrier
Extraction capacity	Standard	Power	PowerPlus
Ø 160 mm	1000 m <sup>3</sup> /h (590 CFM)	2 x 1000 m <sup>3</sup> /h (590 CFM)	Not applicable
Ø 200 mm	1450 m <sup>3</sup> /h (850 CFM)	2 x 1450 m <sup>3</sup> /h (850 CFM)	1800 m <sup>3</sup> /h (1050 CFM)
Sound level			
Without silencer	75 dB(A)	76 dB(A)	76 dB(A)
With silencer	67 dB(A)	71 dB(A)	71 dB(A)

\* Ask your sales representative for the product data sheet with all specifications.

# PLYMOVENT®

clean air at work

### International Distributor Sales

Plymovent Group BV

P.O. Box 9350

1800 GJ Alkmaar

The Netherlands

T +31 (0)72 5640 604

F +31 (0)72 5644 469

E [export@plymovent.com](mailto:export@plymovent.com)

## PLYMOVENT OFFERS TOTAL SOLUTIONS FOR AIR CLEANING

For over 40 years, Plymovent has been gaining experience in the field of air cleaning. We not only have extensive knowledge of the extraction and filtration of welding fumes and oil mist in metalworking industries, we are also specialised in the removal of vehicle exhaust fumes.

Your authorised Plymovent distributor:

*Plymovent cares about the air you breathe. We offer products, systems and services which ensure clean air at work, anywhere in the world.*

*We respect the environment and we deliver high-quality products. Our expertise gained over many years and our genuine commitment to customer requirements enable us to provide precisely the solutions you need.*

Plymovent reserves the right to make design changes.

[www.plymovent.com](http://www.plymovent.com)